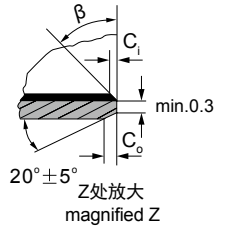
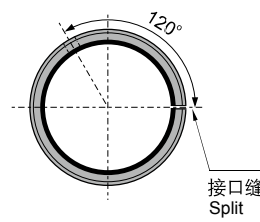
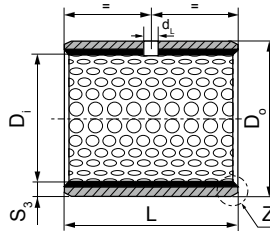
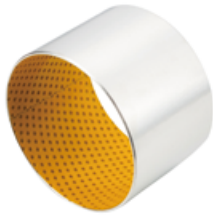


FRB-20 POM 轴承规格及公差

FRB-20 POM Sleeve Bushing Specification & Tolerance



内外倒角 ID and OD chamfers

S ₃	C ₀	C _i	β
1.0	0.6±0.3	0.30±0.2	30°±5°
1.5	0.7±0.3	0.50±0.2	30°±5°

S ₃	C ₀	C _i	β
2.00	1.2±0.4	0.50±0.3	30°±5°
2.50	1.8±0.6	0.80±0.3	45°±5°

单位Unit: mm

轴径 Shaft D _s h8	座孔 Housing H7 D _h	(OD) 外径公差 Tolerance D ₀	(ID)压装后 内孔公差 After fixed D _{1a}	配合间隙 Clearance D ₀	壁厚 Wall thick- ness S ₃	油孔 Oil hole d _L	长度 L ⁰ _{-0.40}																									
							10	15	20	25	30	35	40	45	50	60																
10	-0.022	12 +0.018	12 +0.065 +0.030	10.108 10.040	0.130 0.040	0.980 0.955	4	1010	1015	1020																						
12	-0.027	14 +0.018	14 +0.065 +0.030	12.108 12.040				0.135 0.040	0.980 0.955	4	1210	1215	1220																			
14	-0.027	16 +0.018	16 +0.065 +0.030	14.108 14.040							0.135 0.040	0.980 0.955	4	1415	1420																	
15	-0.027	17 +0.018	17 +0.065 +0.030	15.108 15.040										0.135 0.040	0.980 0.955	4	1515	1520	1525													
16	-0.027	18 +0.018	18 +0.065 +0.030	16.108 16.040													0.135 0.040	0.980 0.955	4	1615	1620	1625										
18	-0.027	20 +0.021	20 +0.075 +0.035	18.111 18.040																0.138 0.040	0.980 0.955	4	1815	1820	1825							
20	-0.033	23 +0.021	23 +0.075 +0.035	20.131 20.050	0.164 0.050	1.475 1.445	6																2015	2020	2025	2030						
22	-0.033	25 +0.021	25 +0.075 +0.035	22.131 22.050				0.164 0.050	1.475 1.445	6													2215	2220	2225	2230						
25	-0.033	28 +0.021	28 +0.075 +0.035	25.131 25.050							0.188 0.060	1.970 1.935	6										2515	2520	2525	2530						
28	-0.033	32 +0.025	32 +0.085 +0.045	28.155 28.060										0.188 0.060	1.970 1.935	6							2820	2825	2830							
30	-0.033	34 +0.025	34 +0.085 +0.045	30.155 30.060													0.194 0.060	2.460 2.415	8				3020	3025	3030	3035	3040					
35	-0.039	39 +0.025	39 +0.085 +0.045	35.155 35.060																0.194 0.060	2.460 2.415	8	3520	3525	3530	3535	3540					
40	-0.039	44 +0.025	44 +0.085 +0.045	40.155 40.060	0.234 0.080	2.460 2.415	8																4020	4025	4030	4035	4040	4045	4050			
45	-0.039	50 +0.025	50 +0.085 +0.045	45.195 45.080				0.234 0.080	2.460 2.415	8													4520	4525	4530	4535	4540	4545	4550			
50	-0.039	55 +0.030	55 +0.100 +0.055	50.200 50.080							0.239 0.080	2.460 2.415	8										5030	5035	5040	5045	5050	5060				
55	-0.046	60 +0.030	60 +0.100 +0.055	55.200 55.080										0.246 0.080	2.460 2.415	8							5530	5535	5540	5545	5550	5560				
60	-0.046	65 +0.030	65 +0.100 +0.055	60.200 60.080													0.246 0.080	2.460 2.415	8				6030	6035	6040	6045	6050	6060				